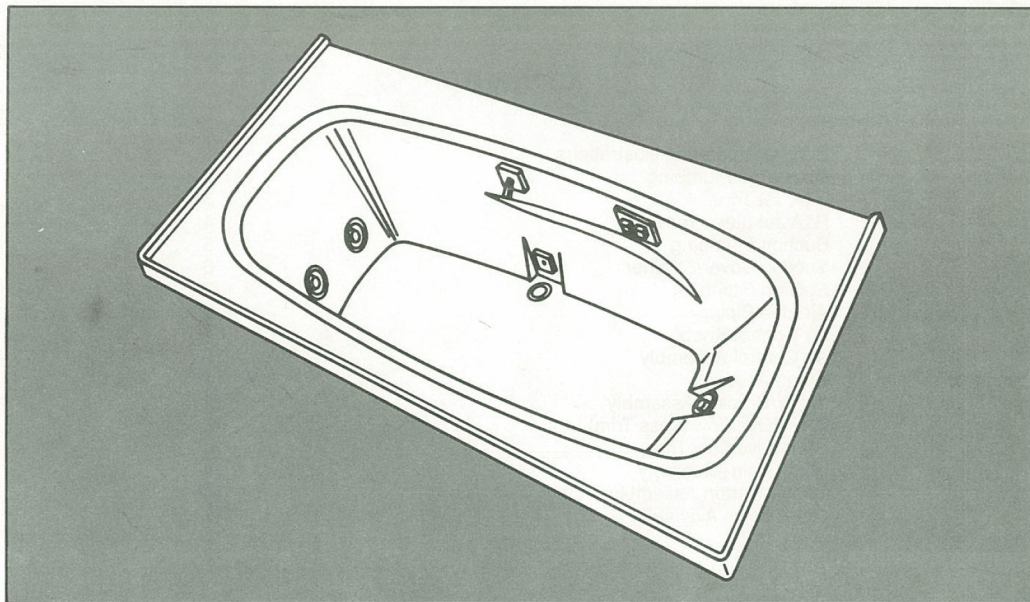




The SERENA™ Whirlpool Bath



PARTS CATALOG

Model #4980000 Level 1
Issue Date: 2/86
Catalog #2667000B

CONTENTS

| | Page |
|--------------------------------|------|
| Serena Reference Illustrations | 1 |
| Discharge Plumbing | 2 |
| HTA Jet Trim | 3 |
| HTA Jet (Less Trim) | 4 |
| Suction Plumbing | 5 |
| Suction Cover/Strainer | 6 |
| Suction Fitting | 7 |
| Air Line Piping | 8 |
| Air Control Knob | 9 |
| Air Control Assembly | 10 |
| Pump Assembly | 11 |
| Motor/Bracket Assembly | 12 |
| Drain/Overflow (Less Trim) | 13 |
| Drain/Overflow Trim | 14 |
| Vent/Drain Assembly | 15 |
| Repair Carton Assembly | 16 |
| Other Items Available | 17 |

TO ORDER

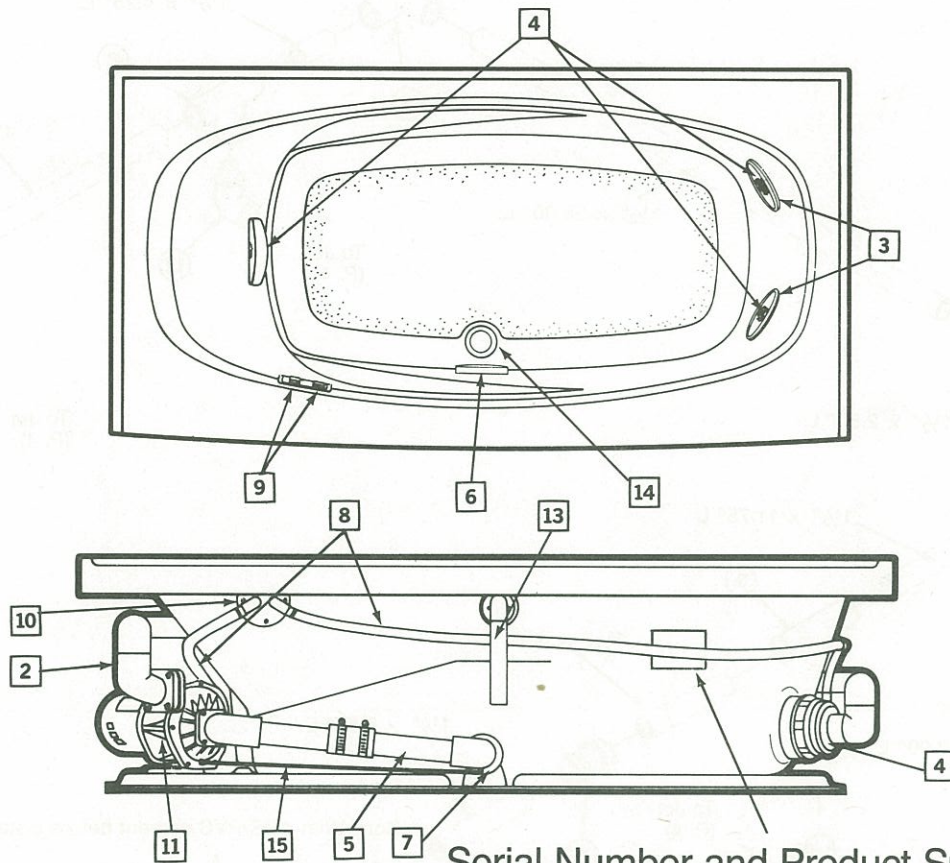
Order by part numbers unless otherwise noted. Quantities shown in this catalog indicate the number of items required. When ordering, specify the quantity needed.



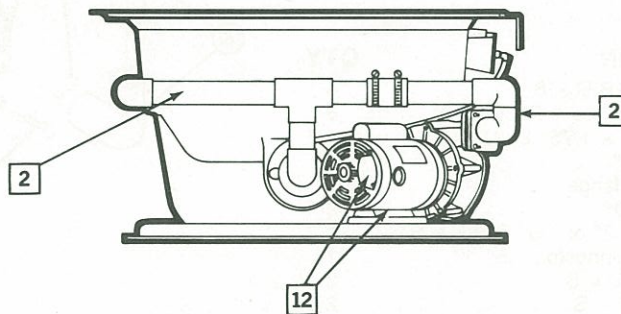
SERENA

Model #4980000 Level 1
Issue Date: 2/86

Repair Assemblies Are Referenced to Page Numbers Shown Below.



Serial Number and Product Specification



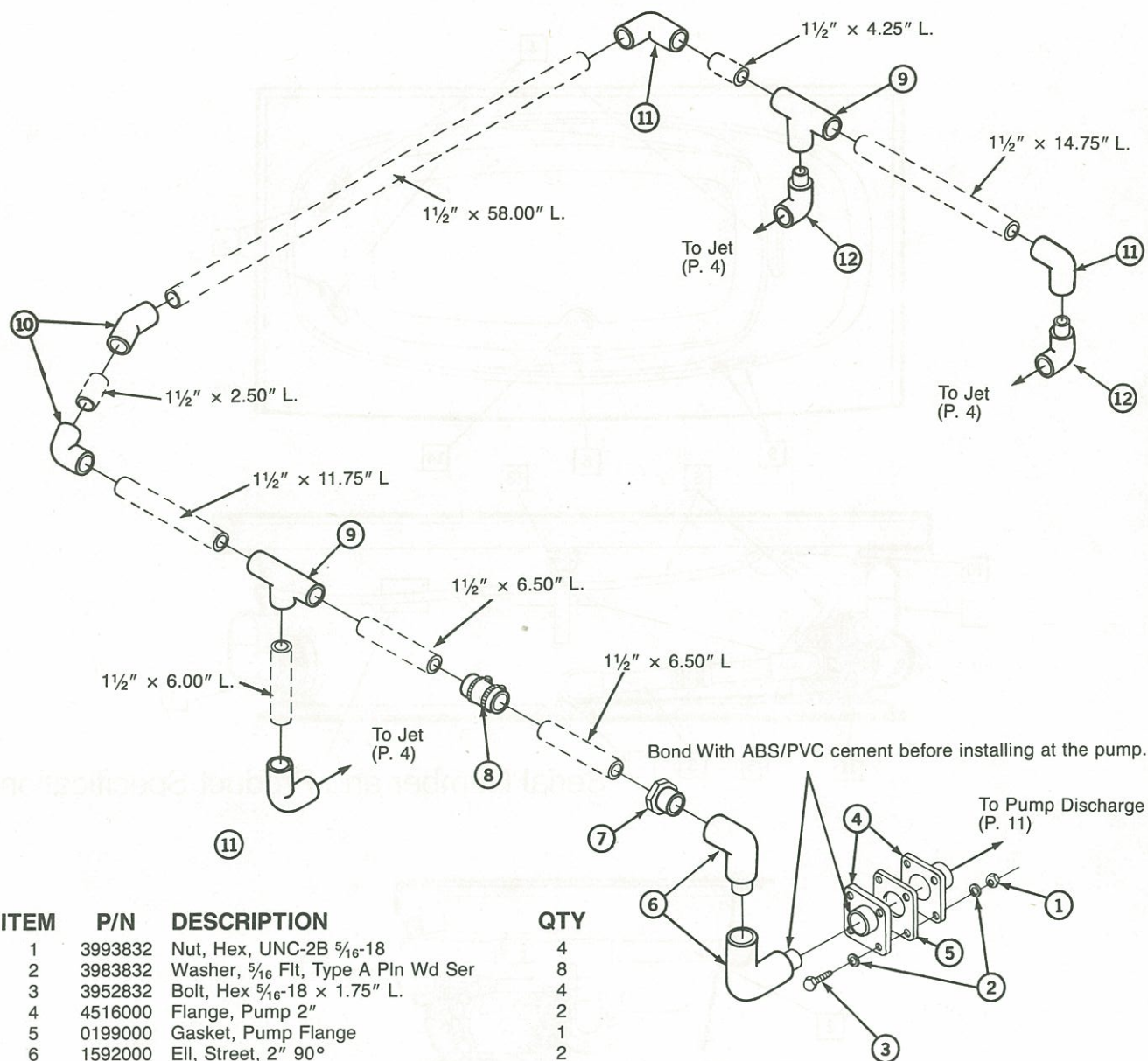


SERENA

Model #4980000 Level 1
Issue Date: 2/86

DISCHARGE PLUMBING

(1½" Sch. 40 PVC Piping, shown for reference, is not available from Jacuzzi Whirlpool Bath.)



| ITEM | P/N | DESCRIPTION | QTY |
|------|---------|-------------------------------------|-----|
| 1 | 3993832 | Nut, Hex, UNC-2B 5/16-18 | 4 |
| 2 | 3983832 | Washer, 5/16 Flt, Type A Pln Wd Ser | 8 |
| 3 | 3952832 | Bolt, Hex 5/16-18 x 1.75" L. | 4 |
| 4 | 4516000 | Flange, Pump 2" | 2 |
| 5 | 0199000 | Gasket, Pump Flange | 1 |
| 6 | 1592000 | Ell, Street, 2" 90° | 2 |
| 7 | 0473000 | Bushing, Rdg., 2" x 1½" SPIG x S | 1 |
| 8 | 2448000 | Repair Piping Connector, 1.5" | 1 |
| 9 | 0167000 | Tee, 1½", S x S x S | 2 |
| 10 | 0157000 | Ell, 45°, 1½", S x S | 2 |
| 11 | 0239000 | Ell, 90°, 1½", S x S | 3 |
| 12 | 0955000 | Ell, 90°, 1½", Street x Male Slip | 2 |

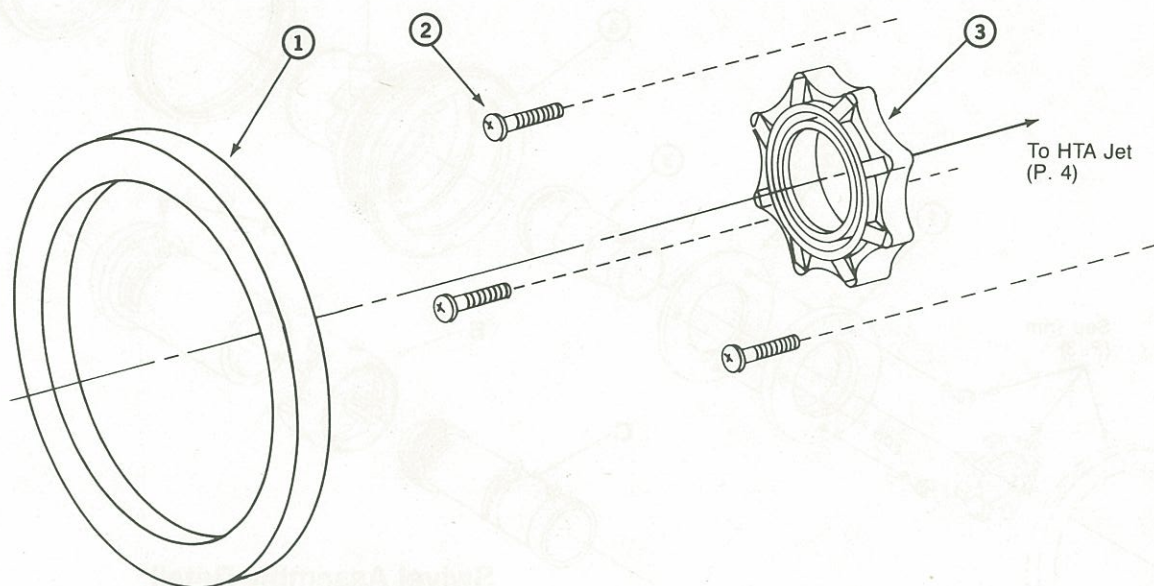


SERENA

Model #4980000 Level 1
Issue Date: 2/86

HTA JET TRIM

(Quantity shown is the quantity needed per jet.)



HTA Jet Trim, Chrome

| ITEM | P/N | DESCRIPTION | QTY |
|------|----------|------------------------------------|-----|
| 1 | 4120827 | Face Ring, HTA, Chrome | 1 |
| 2 | 3967000 | Screw, Mach., PHP, #8-32 x .50" L. | 3 |
| 3 | *3641827 | Venturi Handle, Chrome | 1 |

HTA Jet Trim, Bright Brass

| ITEM | P/N | DESCRIPTION | QTY |
|------|----------|---|-----|
| 1 | 4120829 | Face Ring, HTA, Bright Brass | 1 |
| 2 | 4043829 | Screw, PHPM, #8-32 x .50" L., Bright Brass | 3 |
| 3 | *3641829 | Venturi Handle, Bright Brass | 1 |

HTA Jet Trim, Gold

| ITEM | P/N | DESCRIPTION | QTY |
|------|----------|------------------------------------|-----|
| 1 | 4120828 | Face Ring, HTA, Gold | 1 |
| 2 | 4043828 | Screw, PHPM, #8-32 x .50" L., Gold | 3 |
| 3 | *3641828 | Venturi Handle, Gold | 1 |

HTA Jet Trim, Antique Brass

| ITEM | P/N | DESCRIPTION | QTY |
|------|----------|--|-----|
| 1 | 4120847 | Face Ring, HTA, Antique Brass | 1 |
| 2 | 4043847 | Screw, PHPM, #8-32 x .50" L., Antique Brass | 3 |
| 3 | *3641847 | Venturi Handle, Antique Brass | 1 |

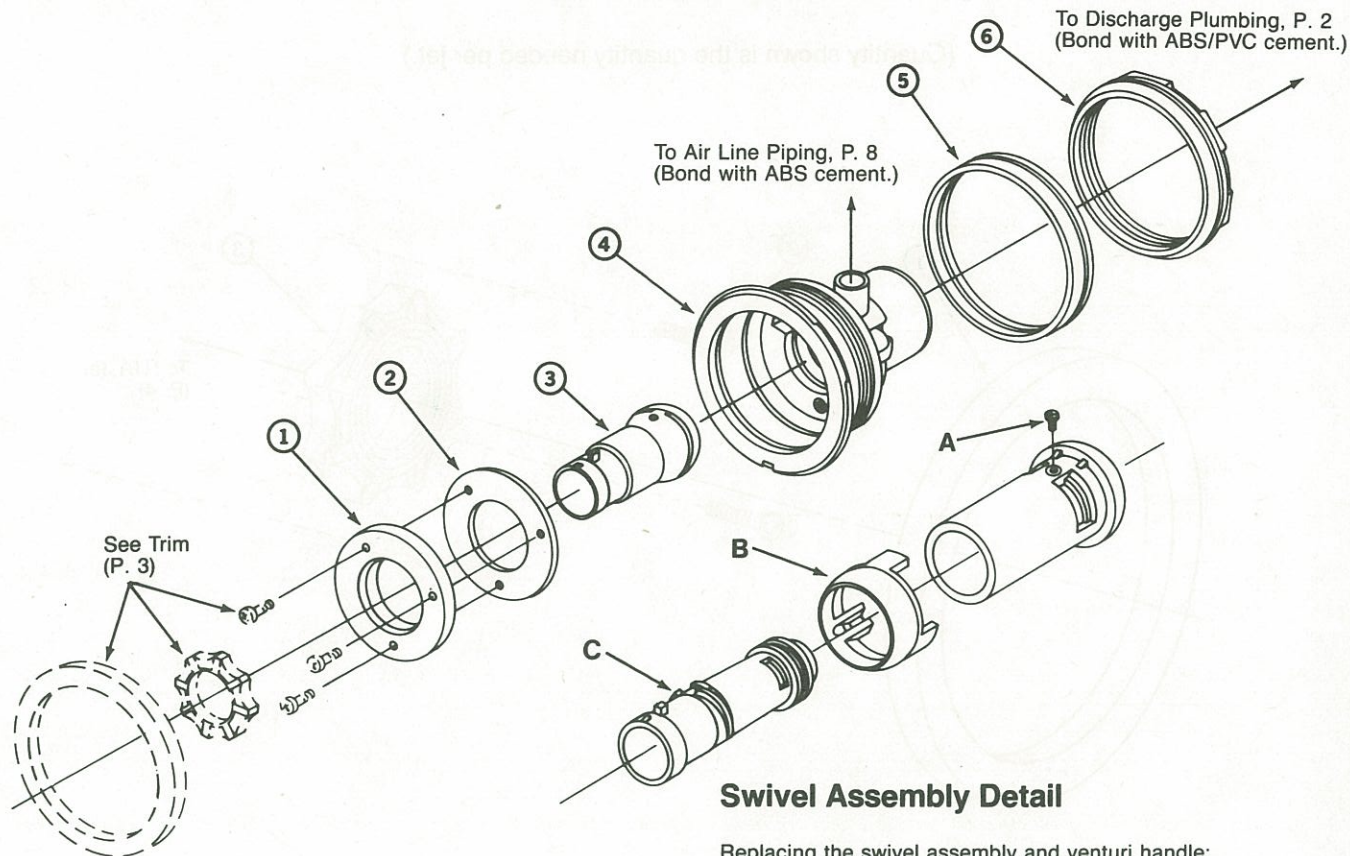
NOTE: When ordering Venturi Handle, HTA Swivel Assembly must also be ordered. See Page 4, Item 3.



SERENA

Model #4980000 Level 1
Issue Date: 2/86

HTA JET



Swivel Assembly Detail

Replacing the swivel assembly and venturi handle:

Remove 3 screws securing clamping ring and gasket from jet body. Pull swivel ring B (see Detail) away from swivel to expose retaining screw A. Remove screw A from swivel. Turn venturi C counterclockwise until it is unscrewed and free from the swivel. Install new swivel assembly, securing it with clamping ring, gasket, and 3 screws. Screws are properly tightened when the swivel assembly can still be manually moved from side to side, but tight enough to allow the venturi handle to be turned to adjust water flow without turning the swivel. To install the handle, align the two projections on the swivel assembly with the notches on the handle and snap it on. Note: When installed, the handle is permanently in place: attempting to remove it will damage the snap-on feature of the handle.

| ITEM | P/N | DESCRIPTION | QTY |
|------|----------|----------------------------|-----|
| 1 | 1926000 | Clamping Ring, HTA | 1 |
| 2 | 1928000 | Gasket, Clamping Ring, HTA | 1 |
| 3 | *4881000 | Swivel Assembly, HTA | 1 |
| 4 | 1644000 | Body, HTA Inlet | 1 |
| 5 | 1925000 | Back-up Ring, HTA Inlet | 1 |
| 6 | 1645000 | Nut, HTA Inlet | 1 |

NOTE: When ordering HTA Swivel Assembly, Venturi Handle must also be ordered. See Page 3, Item 3.

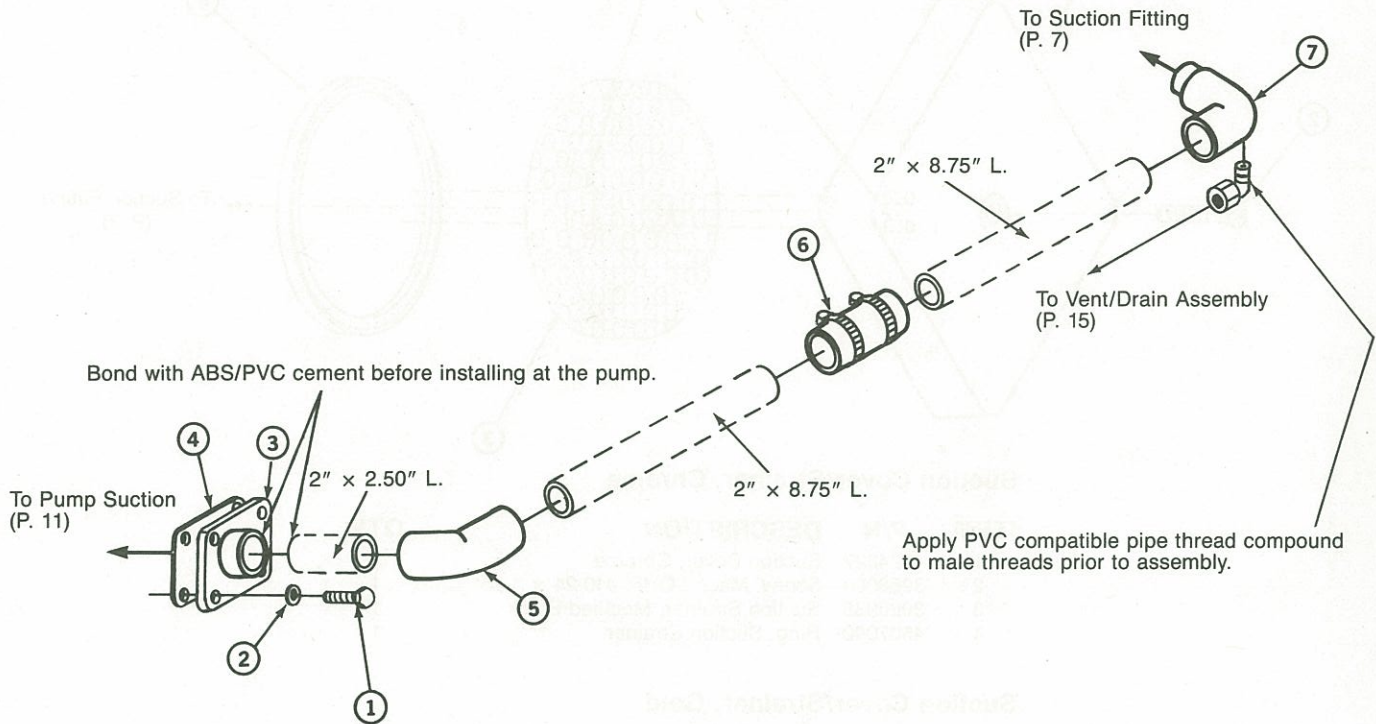


SERENA

Model #4980000 Level 1
Issue Date: 2/86

SUCTION PLUMBING

(2" Sch. 40 PVC, shown for reference, is not available from Jacuzzi Whirlpool Bath.)



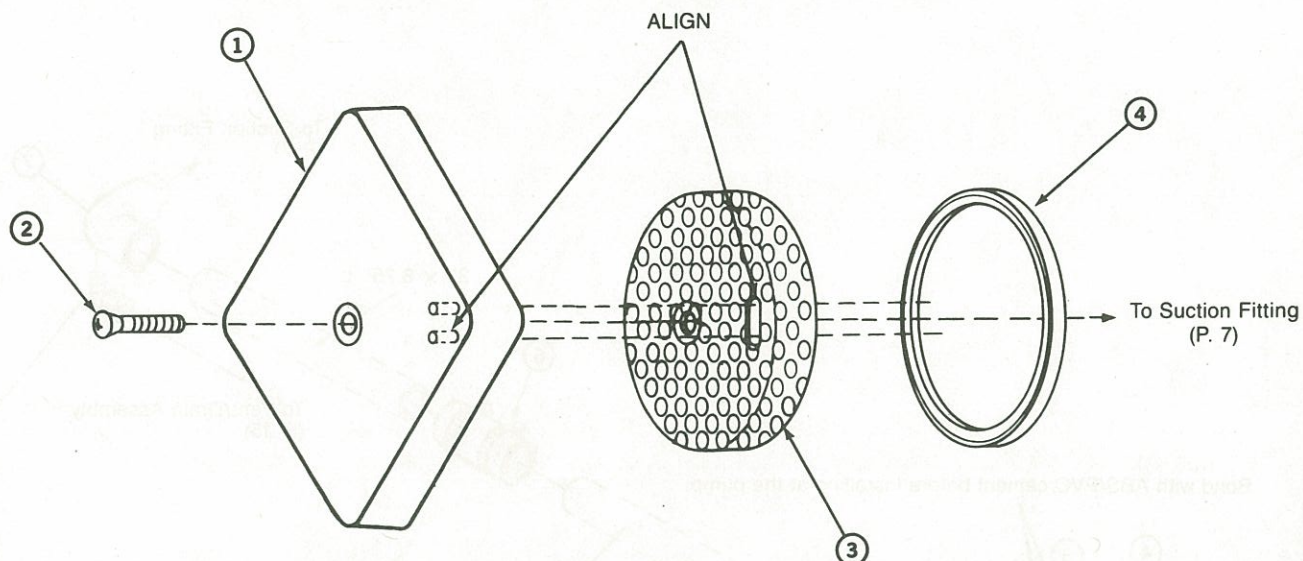
| ITEM | P/N | DESCRIPTION | QTY |
|------|---------|---|-----|
| 1 | 3951832 | Bolt, Hex $\frac{5}{16}$ "-18 x 1.00" L. | 4 |
| 2 | 3983832 | Washer, $\frac{5}{16}$ " Flt, Type A Pln Wd Ser | 4 |
| 3 | 4516000 | Flange, Pump 2" | 1 |
| 4 | 0199000 | Gasket, Pump Flange | 1 |
| 5 | 0522000 | Ell, 45°, 2" S x S | 1 |
| 6 | 2634000 | Repair Piping Connector, 2" | 1 |
| 7 | 4517000 | Ell, Street, 2" | 1 |



SERENA

Model #4980000 Level 1
Issue Date: 2/86

SUCTION COVER/STRAINER



Suction Cover/Strainer, Chrome

| ITEM | P/N | DESCRIPTION | QTY |
|------|---------|--------------------------------------|-----|
| 1 | 4124827 | Suction Cover, Chrome | 1 |
| 2 | 3958000 | Screw, Mach., OHP, #10-24 x 1.25" L. | 1 |
| 3 | 3060836 | Suction Strainer, Modified Black | 1 |
| 4 | 4507000 | Ring, Suction Strainer | 1 |

Suction Cover/Strainer, Gold

| ITEM | P/N | DESCRIPTION | QTY |
|------|---------|--------------------------------------|-----|
| 1 | 4124828 | Suction Cover, Gold | 1 |
| 2 | 4190828 | Screw, OHPM, #10-24 x 1.25" L., Gold | 1 |
| 3 | 3060836 | Suction Strainer, Modified Black | 1 |
| 4 | 4507000 | Ring, Suction Strainer | 1 |

Suction Cover/Strainer, Bright Brass

| ITEM | P/N | DESCRIPTION | QTY |
|------|---------|--|-----|
| 1 | 4124829 | Suction Cover, Bright Brass | 1 |
| 2 | 4190829 | Screw, OHPM, #10-24 x 1.25" L., Bright Brass | 1 |
| 3 | 3060836 | Suction Strainer, Modified Black | 1 |
| 4 | 4507000 | Ring, Suction Strainer | 1 |

Suction Cover/Strainer, Antique Brass

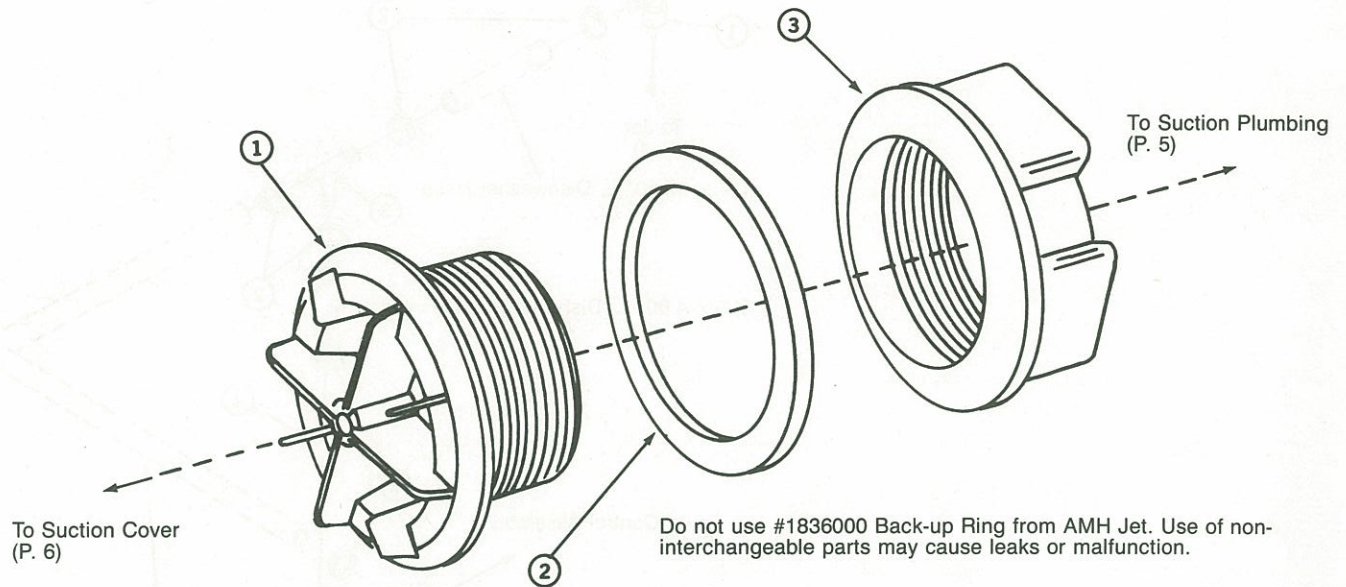
| ITEM | P/N | DESCRIPTION | QTY |
|------|---------|---|-----|
| 1 | 4124847 | Suction Cover, Antique Brass | 1 |
| 2 | 4190847 | Screw, OHPM, #10-24 x 1.25" L., Antique Brass | 1 |
| 3 | 3060836 | Suction Strainer, Modified Black | 1 |
| 4 | 4507000 | Ring, Suction Strainer | 1 |



SERENA

Model #4980000 Level 1
Issue Date: 2/86

SUCTION FITTING



| ITEM | P/N | DESCRIPTION | QTY |
|------|---------|------------------------------|-----|
| 1 | 1958000 | Suction Fitting Sub-Assembly | 1 |
| 2 | 2136000 | Ring, Back-up | 1 |
| 3 | 1643000 | Locknut, Suction Fitting | 1 |

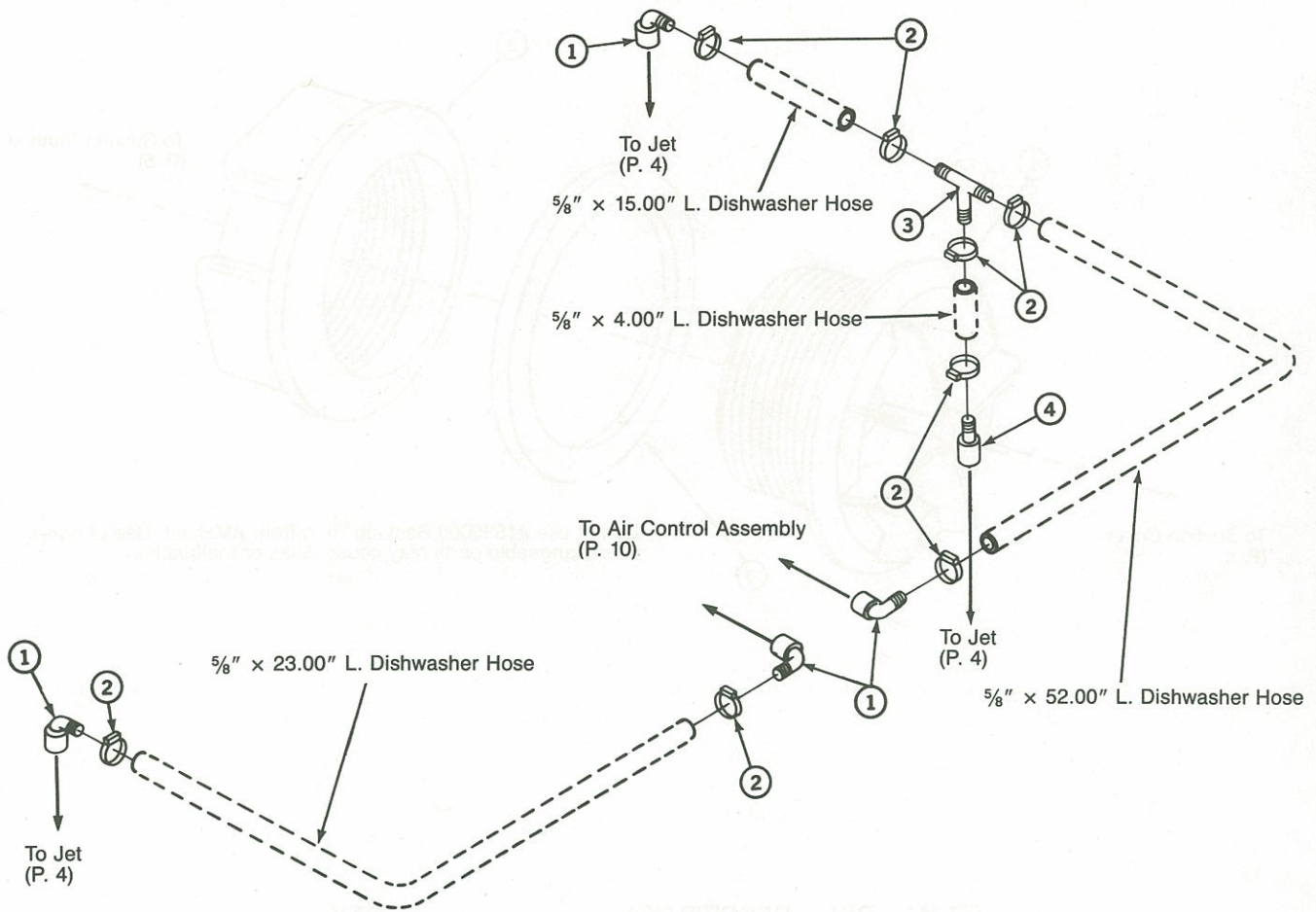


SERENA

Model #4980000 Level 1
Issue Date: 2/86

AIR LINE PIPING

($\frac{5}{8}$ " Dishwasher hose, shown for reference, is not available from Jacuzzi Whirlpool Bath.)



| ITEM | P/N | DESCRIPTION | QTY |
|------|---------|----------------------------------|-----|
| 1 | 1464000 | 90° Hose Adapter—Air Line | 4 |
| 2 | 2181000 | Clamp, Hose | 8 |
| 3 | 1404000 | Tee, Barbed, $\frac{1}{2}$ " | 1 |
| 4 | 1463000 | Hose Adapter, Air Line, Straight | 1 |

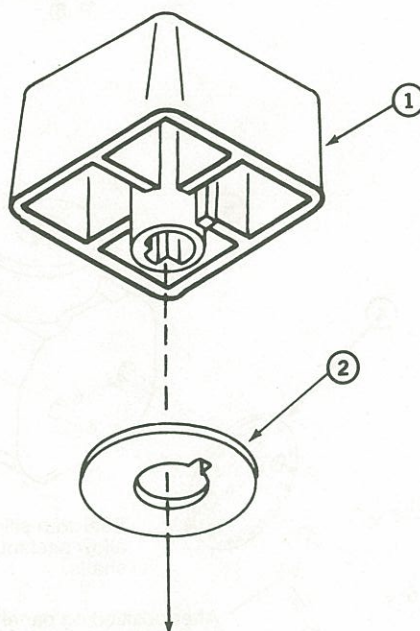


SERENA

Model #4980000 Level 1
Issue Date: 2/86

AIR CONTROL KNOB

(Order two of each to replace the full set.)



To Air Control
(P. 10)

Air Control Knob Assembly, Chrome

| ITEM | P/N | DESCRIPTION |
|------|---------|---------------------------------------|
| 1 | 5132827 | Air Control Knob Sub-Assembly, Chrome |
| 2 | 3153000 | Spacer, Air Control Knob |

| QTY |
|-----|
| 1 |
| 1 |

Air Control Knob Assembly, Bright Brass

| ITEM | P/N | DESCRIPTION |
|------|---------|---|
| 1 | 5132829 | Air Control Knob Sub-Assembly, Bright Brass |
| 2 | 3153000 | Spacer, Air Control Knob |

| QTY |
|-----|
| 1 |
| 1 |

Air Control Knob Assembly, Gold

| ITEM | P/N | DESCRIPTION |
|------|---------|-------------------------------------|
| 1 | 5132828 | Air Control Knob Sub-Assembly, Gold |
| 2 | 3153000 | Spacer, Air Control Knob |

| QTY |
|-----|
| 1 |
| 1 |

Air Control Knob Assembly, Antique Brass

| ITEM | P/N | DESCRIPTION |
|------|---------|--|
| 1 | 5132847 | Air Control Knob Sub-Assembly, Antique Brass |
| 2 | 3153000 | Spacer, Air Control Knob |

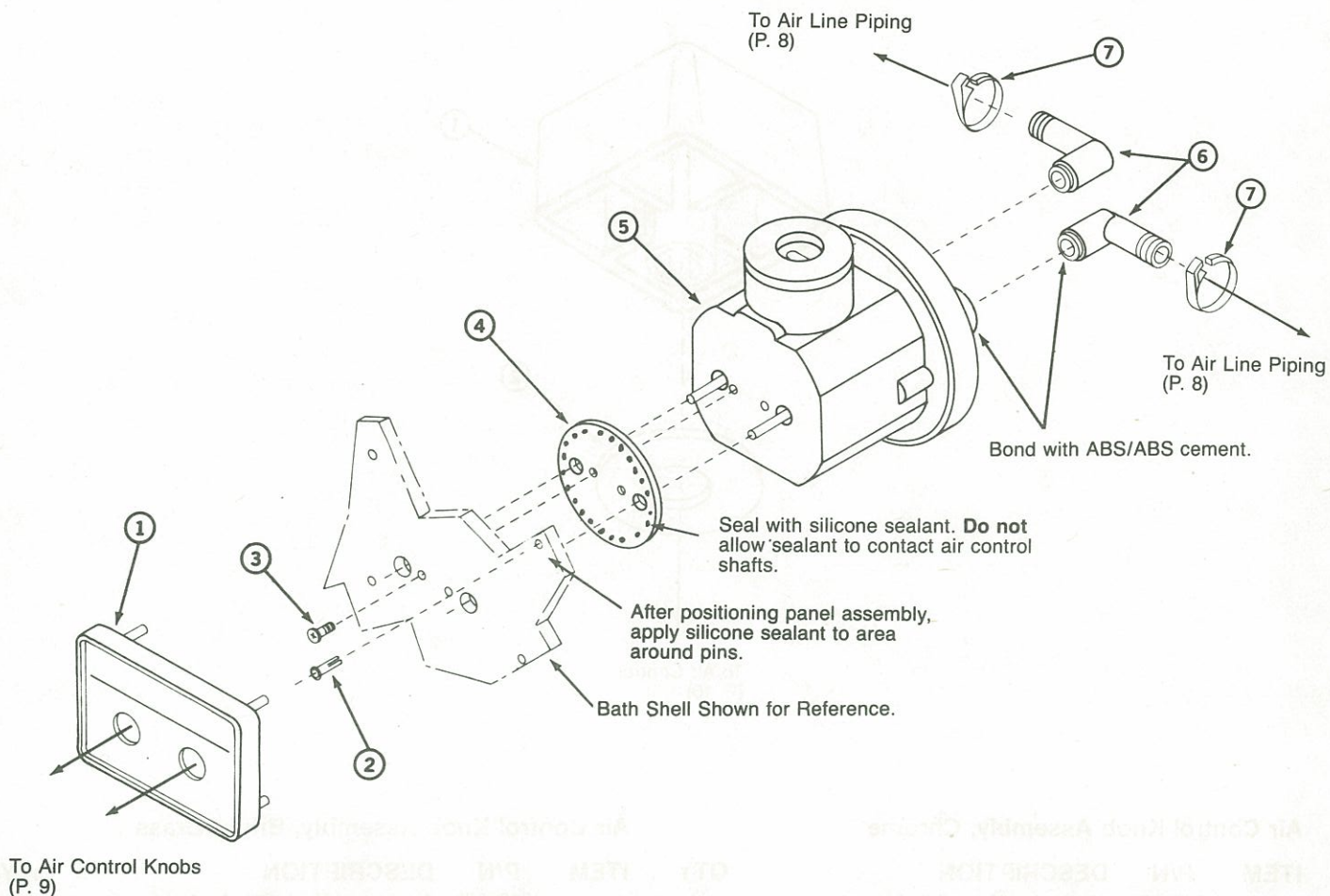
| QTY |
|-----|
| 1 |
| 1 |



SERENA

Model #4980000 Level 1
Issue Date: 2/86

AIR CONTROL ASSEMBLY



| ITEM | P/N | DESCRIPTION |
|------|---------|--|
| 1 | 1108000 | Panel Assy., Silent Air Induction System |
| 2 | 1000000 | Speed Clip, Tubular |
| 3 | 3968000 | Screw, Machined, PHP #8-32 x .75" L. |
| 4 | 1120000 | Gasket, Airbox |
| 5 | 2124000 | Air Control Unit Sub-Assembly |
| 6 | 1464000 | 90° Hose Adapter—Air Line |
| 7 | 2181000 | Clamp, Hose |

QTY

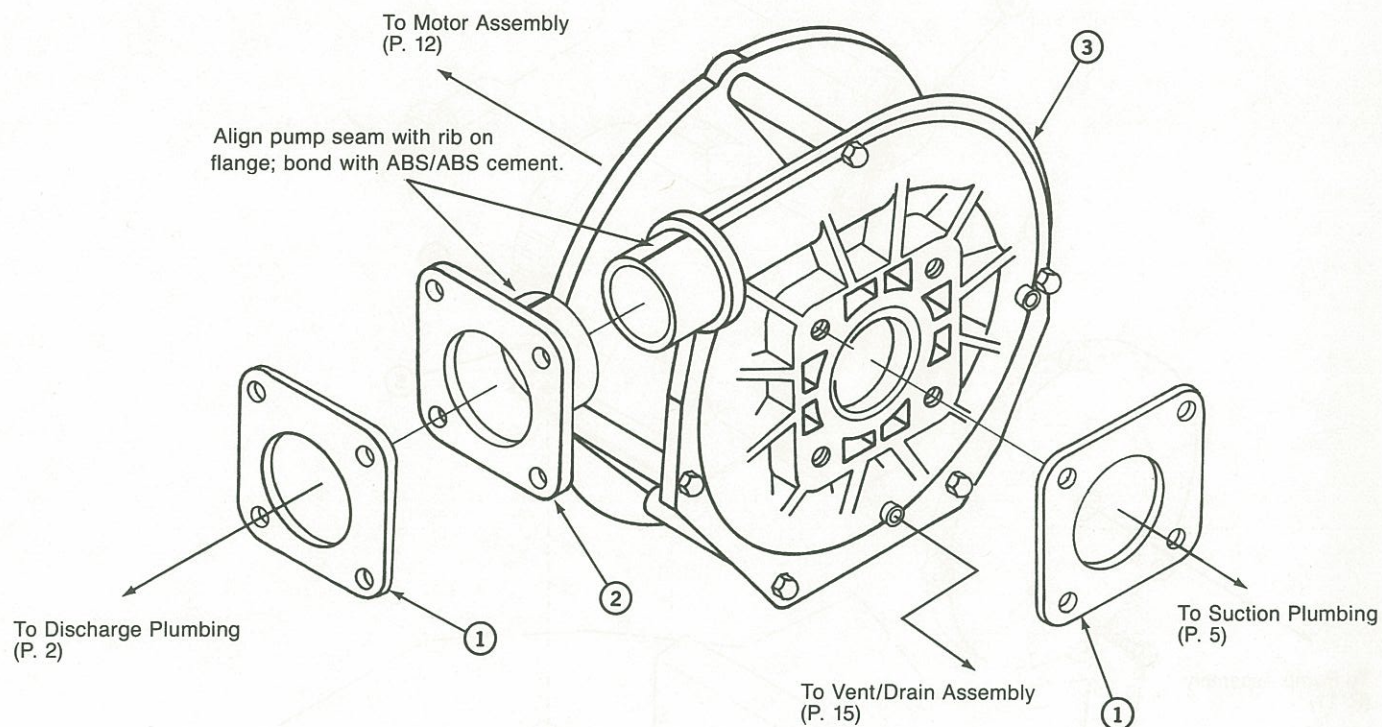
1
4
2
1
1
2
2



SERENA

Model #4980000 Level 1
Issue Date: 2/86

PUMP ASSEMBLY



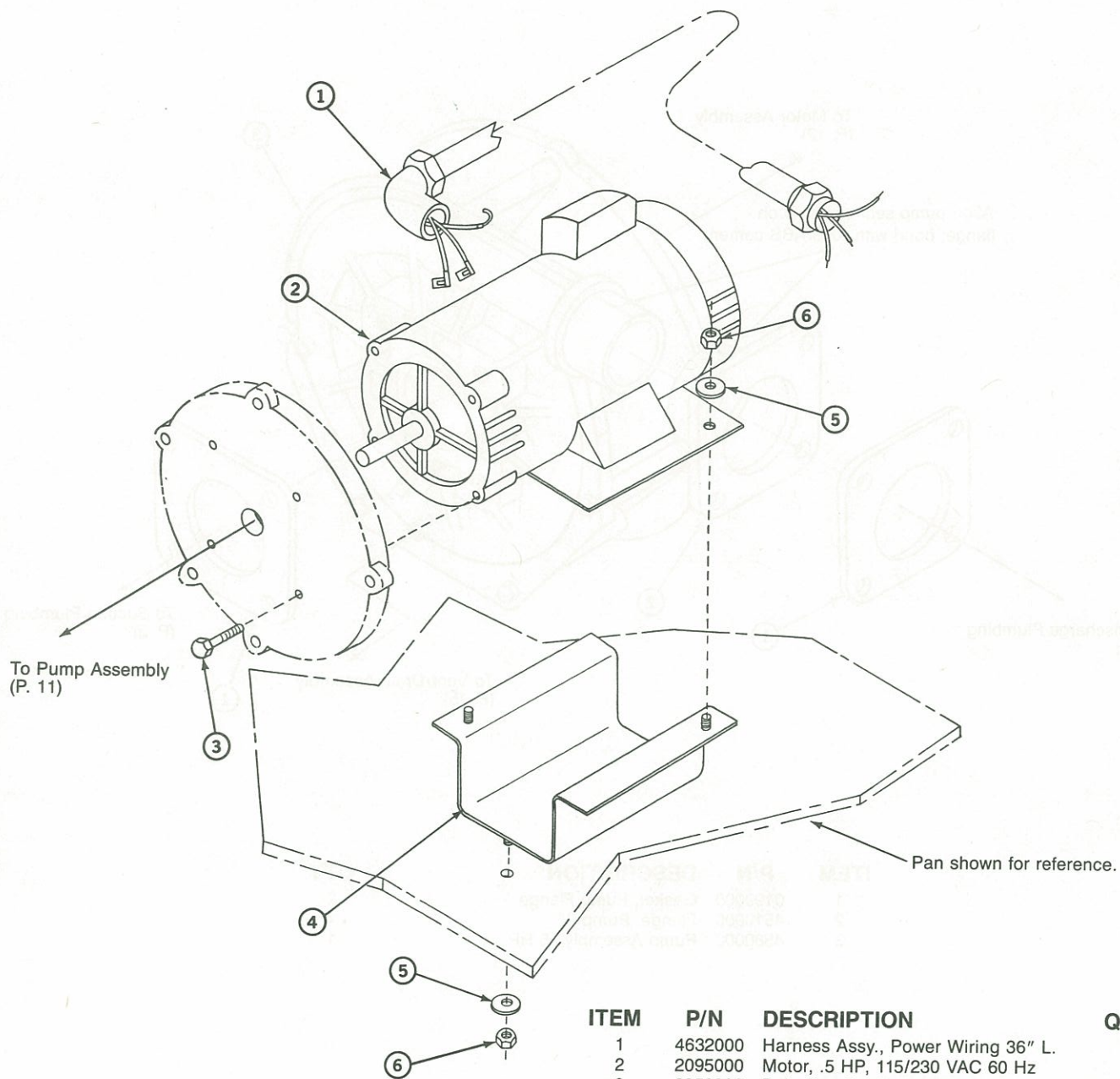
| ITEM | P/N | DESCRIPTION | QTY |
|------|---------|----------------------|-----|
| 1 | 0199000 | Gasket, Pump Flange | 2 |
| 2 | 4516000 | Flange, Pump 2" | 1 |
| 3 | 4580000 | Pump Assembly, .5 HP | 1 |



SERENA

Model #4980000 Level 1
Issue Date: 2/86

MOTOR/BRACKET ASSEMBLY



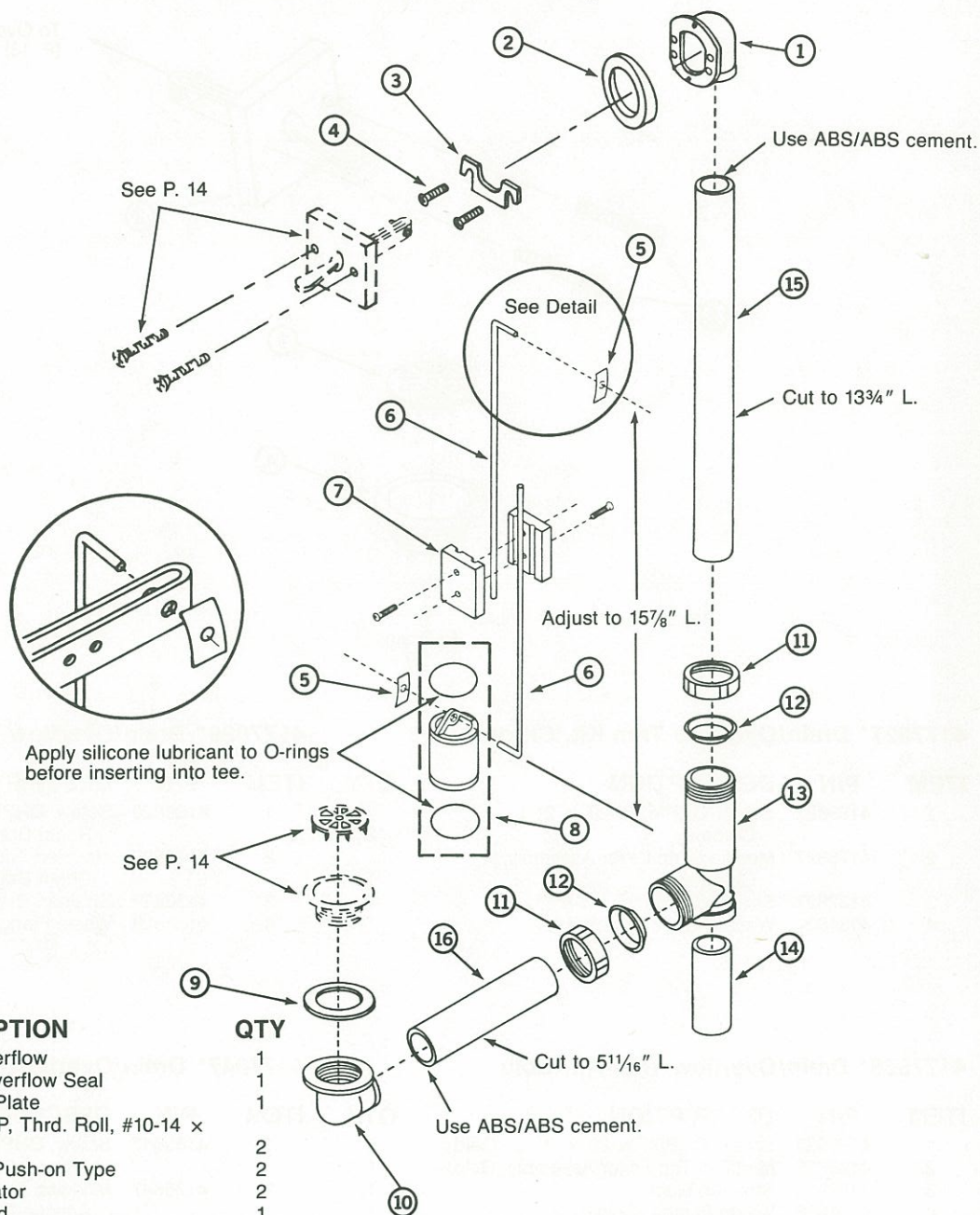
| ITEM | P/N | DESCRIPTION | QTY |
|------|---------|--|-----|
| 1 | 4632000 | Harness Assy., Power Wiring 36" L. | 1 |
| 2 | 2095000 | Motor, .5 HP, 115/230 VAC 60 Hz | 1 |
| 3 | 3953832 | Bolt, Hex $\frac{3}{8}$ -16 x 1.00" L. | 4 |
| 4 | 1604000 | Bracket, Motor Mount | 1 |
| 5 | 3982832 | Washer, $\frac{1}{4}$ " Flt, Type A Pln Wd Ser | 4 |
| 6 | 4034832 | Nut, Locking Hd Kep Type $\frac{1}{4}$ -20 | 4 |



SERENA

Model #4980000 Level 1
Issue Date: 2/86

DRAIN/OVERFLOW (LESS TRIM)



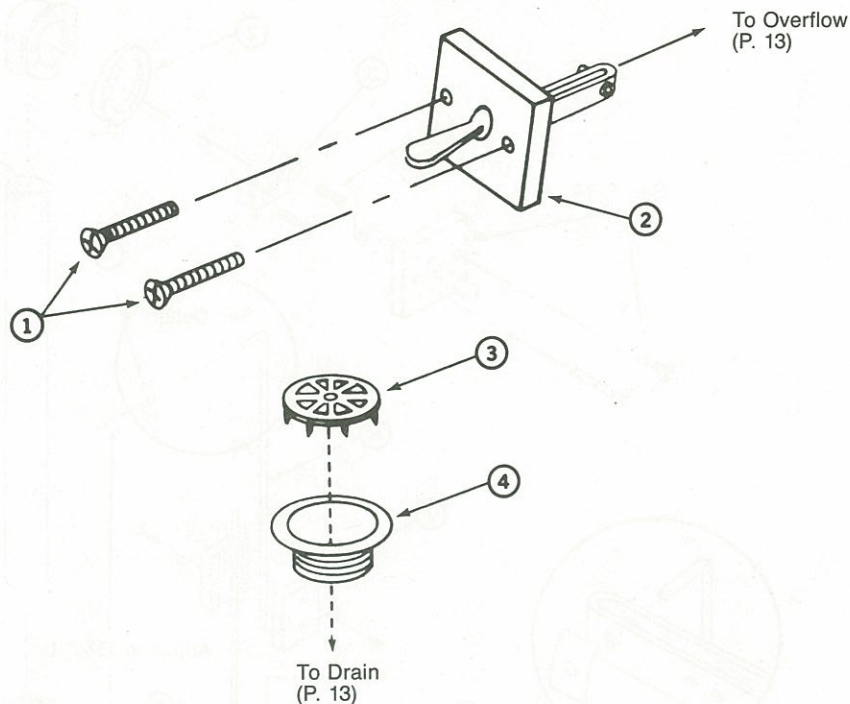
| ITEM | P/N | DESCRIPTION | QTY |
|------|---------|---|-----|
| 1 | 2618000 | Elbow, Overflow | 1 |
| 2 | 2648000 | Gasket, Overflow Seal | 1 |
| 3 | 3597000 | Retaining Plate | 1 |
| 4 | 2660000 | Screw, PHP, Thrd. Roll, #10-14 x 1.75" L. | 1 |
| 5 | 3638000 | Fastener, Push-on Type | 2 |
| 6 | 3595000 | Rod, Actuator | 2 |
| 7 | 2653000 | Clamp, Rod | 1 |
| 8 | 5661000 | Repair Plunger Assembly | 1 |
| 9 | 3591000 | Gasket, Waste Seal | 1 |
| 10 | 3590000 | Elbow, 90° Waste | 1 |
| 11 | 2641000 | Nut, Tube, 1 1/8" DWV | 2 |
| 12 | 2642000 | Washer, Slip Joint, 1 1/2" | 2 |
| 13 | 3588000 | Tee, 1 1/2" x 1 1/2" x 1 1/2" | 1 |
| 14 | 3589000 | Tail Piece | 1 |
| 15 | 4648000 | Tube, 1.50" O.D. ABS x 23.88" L. | 1 |
| 16 | 4647000 | Tube, 1.50" O.D. ABS x 15.88" L. | 1 |



SERENA

Model #4980000 Level 1
Issue Date: 2/86

DRAIN/OVERFLOW TRIM



4177827* Drain/Overflow Trim Kit, Chrome

| ITEM | P/N | DESCRIPTION | QTY |
|------|---------|--------------------------------------|-----|
| 1 | 4189827 | Screw, OHPM, 1/4-20 x 2" L., Chrome | 2 |
| 2 | 4175827 | Modified Trip Lever Assembly, Chrome | 1 |
| 3 | 4132827 | Strainer, Chrome | 1 |
| 4 | 4131827 | Waste Flange, Chrome | 1 |

4177829* Drain/Overflow Trim Kit, Bright Brass

| ITEM | P/N | DESCRIPTION | QTY |
|------|---------|--|-----|
| 1 | 4189829 | Screw, OHPM, 1/4-20 x 2" L., Bright Brass | 2 |
| 2 | 4175829 | Modified Trip Lever Assembly, Bright Brass | 1 |
| 3 | 4132829 | Strainer, Bright Brass | 1 |
| 4 | 4131829 | Waste Flange, Bright Brass | 1 |

4177828* Drain/Overflow Trim Kit, Gold

| ITEM | P/N | DESCRIPTION | QTY |
|------|---------|------------------------------------|-----|
| 1 | 4189828 | Screw, OHPM, 1/4-20 x 2" L., Gold | 2 |
| 2 | 4175828 | Modified Trip Lever Assembly, Gold | 1 |
| 3 | 4132828 | Strainer, Gold | 1 |
| 4 | 4131828 | Waste Flange, Gold | 1 |

4177847* Drain/Overflow Trim Kit, Antique Brass

| ITEM | P/N | DESCRIPTION | QTY |
|------|---------|---|-----|
| 1 | 4189847 | Screw, OHPM, 1/4-20 x 2" L., Antique Brass | 2 |
| 2 | 4175847 | Modified Trip Lever Assembly, Antique Brass | 1 |
| 3 | 4132947 | Strainer, Antique Brass | 1 |
| 4 | 4131847 | Waste Flange, Antique Brass | 1 |

*Order by Trim Number or by Single Part Number.

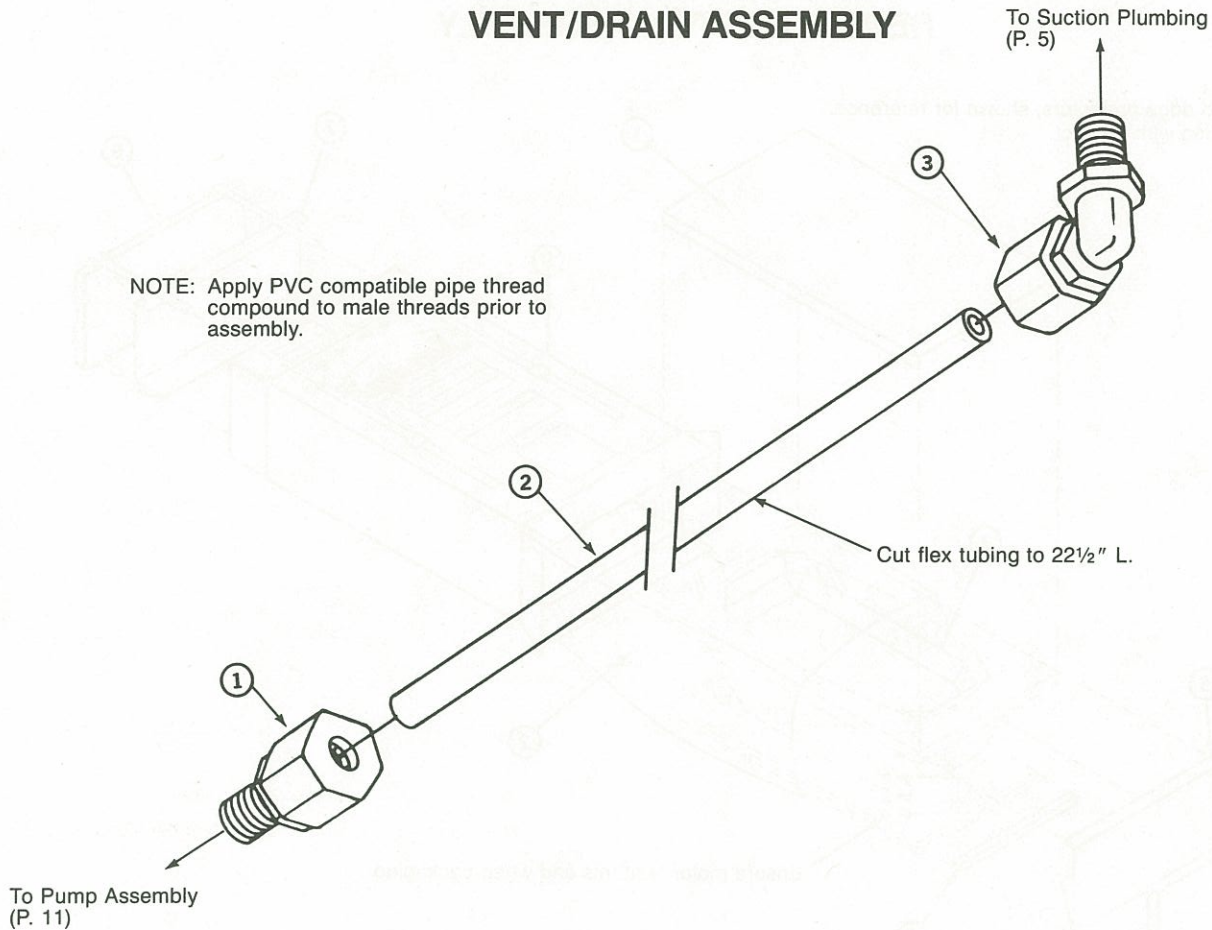


SERENA

Model #4980000 Level 1
Issue Date: 2/86

VENT/DRAIN ASSEMBLY

NOTE: Apply PVC compatible pipe thread compound to male threads prior to assembly.



| ITEM | P/N | DESCRIPTION | QTY |
|------|---------|---|-----|
| 1 | 3054000 | Compression Ftg., Straight, .25" | 1 |
| 2 | 4649000 | Tube, .25" O.D., Flexible Nylon, 75" L. | 1 |
| 3 | 3044000 | Compression Ftg., 90° Ell, .25" | 1 |

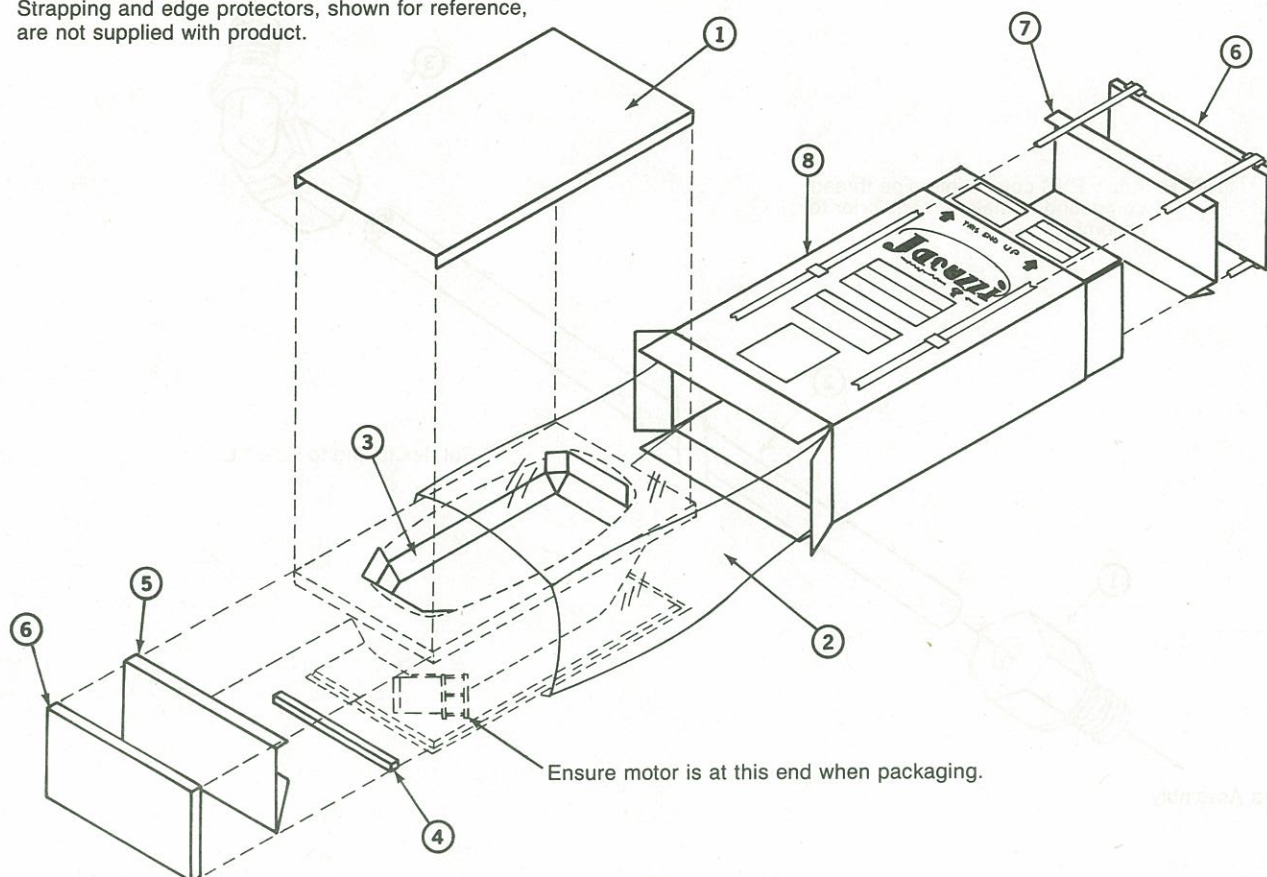


SERENA

Model #4980000 Level 1
Issue Date: 2/86

REPAIR CARTON ASSEMBLY

Strapping and edge protectors, shown for reference, are not supplied with product.



P/N 5545000 REPAIR CARTON ASSEMBLY, SERENA (Order by Assembly Number)

| ITEM | P/N | DESCRIPTION | QTY |
|------|----------|---|-----|
| 1 | 2240000* | U-Cover, Scored, Carton | 1 |
| 2 | 1059000* | Polycovers, Tubs | 1 |
| 3 | 1141000* | Liner, Tub Scored and Slotted Sheet | 1 |
| 4 | 4535000* | Block, Carton 1.5" Thick 37.38" x 2.0" | 1 |
| 5 | 2242000* | Bottom, Spacer-Carton | 1 |
| 6 | 4534000* | Block, Carton 1.5" Thick 37.38" x 20.88" | 2 |
| 7 | 2241000* | Top, Spacer-Carton | 1 |
| 8 | 2239000* | Carton RSC, Serena | 1 |

*Not Available Separately



SERENA

Model #4980000 Level 1
Issue Date: 2/86

OTHER ITEMS AVAILABLE

| | |
|---------|---|
| 2220923 | Skirt Assembly, Serena, C.C. |
| 5380000 | Skirt Assembly, Acrylic, Serena |
| 4203827 | Trim/Drain Assembly, Serena (Chrome) |
| 4203828 | Trim/Drain Assembly, Serena (Gold) |
| 4203829 | Trim/Drain Assembly, Serena (Bright Brass) |
| 4203847 | Trim/Drain Assembly, Serena (Antique Brass) |
| 1832901 | Repair Kit, Gel Coat, Pacifica Blue |
| 1832902 | Repair Kit, Gel Coat, White |
| 1832903 | Repair Kit, Gel Coat, El Dorado Gold |
| 1832904 | Repair Kit, Gel Coat, Tan |
| 1832913 | Repair Kit, Gel Coat, Brittany Blue |
| 1832914 | Repair Kit, Gel Coat, Almond White |
| 1832916 | Repair Kit, Gel Coat, Carmel Brown |
| 1832917 | Repair Kit, Gel Coat, Black |
| 1832918 | Repair Kit, Gel Coat, Valentine Red |
| 1832919 | Repair Kit, Gel Coat, Seafoam Green |
| 1832920 | Repair Kit, Gel Coat, Cornflower Blue |
| 1832921 | Repair Kit, Gel Coat, Italian Chocolate |
| 1832922 | Repair Kit, Gel Coat, Cinnabar |

Limited 90-Day Warranty on Replacement Parts

Warranty Coverage

Jacuzzi Whirlpool Bath (the "Company") provides a limited material and labor warranty on its replacement parts.

Our warranty extends to the original purchaser of the replacement parts who buys it for installation in a Company product used for personal, family or household purposes ("user"). It does not extend to purchasers who intend to resell the product. Additional limitations apply to commercial users, and special rules apply to dealers and distributors.

Our warranty is ninety (90) days, beginning on the date the replacement part was installed or purchased by the user, whichever is later.

Our warranty covers: All replacement parts against defects in material or workmanship, or failure to operate in accordance with the performance ratings for the part.

Without charge to the user, the Company will, at its option, either repair the defective part or replace the defective part.

Warranty Service

In order to obtain service provided under this warranty, during regular business hours contact a Jacuzzi Whirlpool Bath Authorized Service Agent or the Dealer/Distributor who sold the part and describe the problem. (See the white pages of your local telephone book for the location of the nearest Authorized Service Agent.) An Authorized Service Agent will contact the user, inspect the system, and provide the service described herein.

Warranty Limitations

Our warranty is limited and does not cover defects, damage, or failure caused by the installer, user or other person, including but not limited to the following: improper installation or installation not in accordance with the instructions and specifications provided with the part or system; any type of modification of any part or component, including modification to meet local codes; misuse; lack of maintenance or improper maintenance or operation; use of chemicals in units with gold-plated fixtures; improper connections by the installer; improper voltage supply; careless handling; operation of the system without minimum amount of water in the vessel as specified in the Operating Instructions; acts of God.

In addition, the Company will not be responsible for any incidental or consequential damages or losses, direct or indirect, arising from any cause whatsoever; shipping damage; alleged factory damage or defect which was not reported to the Company prior to installation, compliance with local building codes.

Commercial Limitations

In addition to the user Warranty Limitations, our warranty does not cover commercial installations when the part or system has been altered or modified in any way. The part or system is sold on an "as is" basis, and the Company is not responsible for loss of use or profit under any circumstances.

Implied Warranties

Implied warranties of merchantability and fitness for a particular purpose, to the extent that they are applicable, are limited to ninety (90) days from the date of purchase or installation, whichever is later.

Notice: This warranty gives you specific legal rights, and you may also have other rights which vary from state to state. There are no warranties applicable to Jacuzzi Whirlpool Bath producers except as expressly stated herein or as implied in applicable state and Federal laws. The Company will not be responsible for any statements or representations made in any form that go beyond, are broader than, or are inconsistent with authorized literature or specifications furnished by the Company. Some states do not allow limitations on how long an implied warranty lasts, so the above limitation may not apply to you. Also, some states do not allow the exclusion of incidental or consequential damages, so the above limitation or exclusion may not apply to you.

Responsibility to Others

Inspecting the replacement part prior to installation is the responsibility of the user or installer or building contractor who acts on behalf of the user. He is responsible for ensuring the replacement part is free of defects or damage. In the event of a problem, the replacement part must not be installed. The Company is not responsible for defects or damage that could have been discovered, repaired, or avoided by inspection and testing the replacement part prior to installation.

Damage occurring to the replacement part during or after installation is the responsibility of the installer and/or building contractor.

PRODUCT SPECIFICATIONS ARE SUBJECT TO CHANGE WITHOUT NOTICE

Jacuzzi Whirlpool Bath has obtained applicable code (standards) listings generally available on a national basis for products of this type. It is the responsibility of the installer/owner to determine specific local code compliances prior to installation of the product. Jacuzzi Whirlpool Bath makes no representation or warranty regarding, and will not be responsible for any code compliance.

JACUZZI WHIRLPOOL BATH

Subsidiary of Kidde, Inc.

KIDDE

298 North Wiget Lane, P.O. Drawer J, Walnut Creek, CA 94596 (415) 938-7070

Jacuzzi Whirlpool Bath Regional Offices

Western Region: 335 Fischer Ave., Costa Mesa, CA 92626 (714) 751-1244

Great Lakes Region: 415 W. Golf Rd., Suite 49, Arlington Heights, IL 60005 (312) 640-1300

Central Region: 13720 Midway Rd., Suite 110, Dallas, TX 75244 (214) 233-5572

Southeast Region: 2500 Park Central Blvd., Decatur, GA 30035 (404) 981-8222

Northeast Region: West Essex Plaza II, 1129 Bloomfield Ave., West Caldwell, NJ 07006 (201) 575-7710